



Building
STRENGTH
Delivering
PERFORMANCE

PRODUCT
CATALOGUE



Tile
Adhesive



Concrete
Repairs



Protective
Coatings



Tiles
Epoxy Grout



Block
Adhesive



Waterproofing

About Us

KB GROUP

1. KB TMT 2. KB BuildChem

KB Group is built on over three decades of manufacturing expertise.

Our foundation began with KB Ispat Pvt. Ltd., established near Bhavnagar for the production of high-quality steel billets. Through consistent quality and reliable supply, the company earned the trust of manufacturers and later expanded into TMT bars to deliver stronger and more dependable structural steel.

From Strength of Steel to Science of Durability

While steel provides structural strength, long-term performance depends equally on protection, bonding, and durability of construction materials. Recognizing this critical gap in the construction ecosystem, the KB Group diversified into advanced construction chemicals with the launch of KB BuildChem.

KB BuildChem represents the natural evolution of our engineering philosophy—moving from manufacturing the structure to protecting the structure.

Backed by decades of industrial manufacturing discipline, KB BuildChem develops high-performance construction chemical solutions designed to enhance the life, reliability, and resilience of buildings and infrastructure. Our formulations address real site challenges such as water ingress, tile debonding, cracks, and surface deterioration.

Our Integrated Approach

Together, our businesses form a complete strength-to-durability chain:

KB Ispat Pvt. Ltd. - Provides structural strength through quality steel

KB BuildChem - Provides protection and longevity through construction chemistry

This synergy allows us to understand construction from its core framework to its final finish a perspective very few manufacturers possess.

Our Values

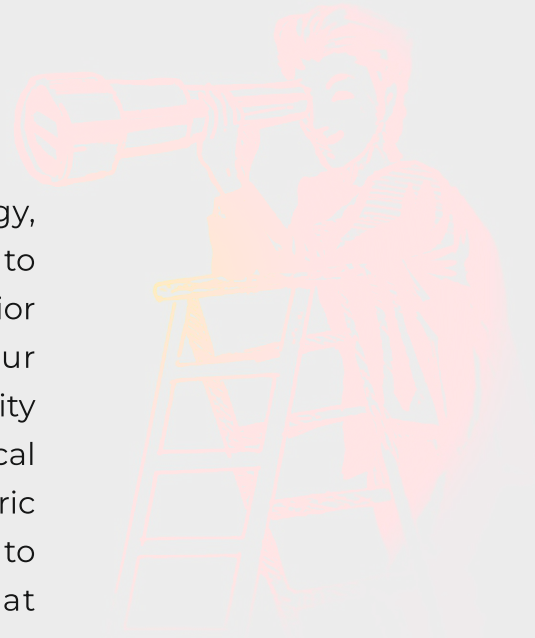
- **Quality** - Precision in every product
- **Innovation** - Driven by R&D
- **Integrity** - Built on trust
- **Performance** - Tested for excellence
- **Reliability** - Consistent results
- **Sustainability** - Future-focused solutions



**WE BUILD STRENGTH IN STEEL AND
PRESERVE IT THROUGH CHEMISTRY.**

Why Us ?

At KB BuildChem, we combine advanced technology, high-quality raw materials, and stringent quality control to deliver construction chemical solutions that ensure superior strength, durability, and long-term performance. Our products are engineered for consistency and reliability across every application, supported by strong technical expertise and on-site guidance. With a customer-centric approach, efficient supply network, and commitment to innovation, we provide cost-effective solutions that professionals can trust for every project.



Our Vision

To become a benchmark brand in construction chemicals by delivering dependable, innovative, and technically advanced solutions.

Our Mission

To strengthen structures, simplify construction practices, and build lasting partnerships through quality and integrity.

At KB BuildChem, we believe true quality is measured not on the day of application - but years later when the structure still stands strong.

KB BuildChem

Built on Chemistry - Backed by Performance - Trusted for Generations

STRONG PROTECTION SMARTER STRUCTURE CARE

Roof
Insulation

Toilet Waterproofing
and Tile Cladding

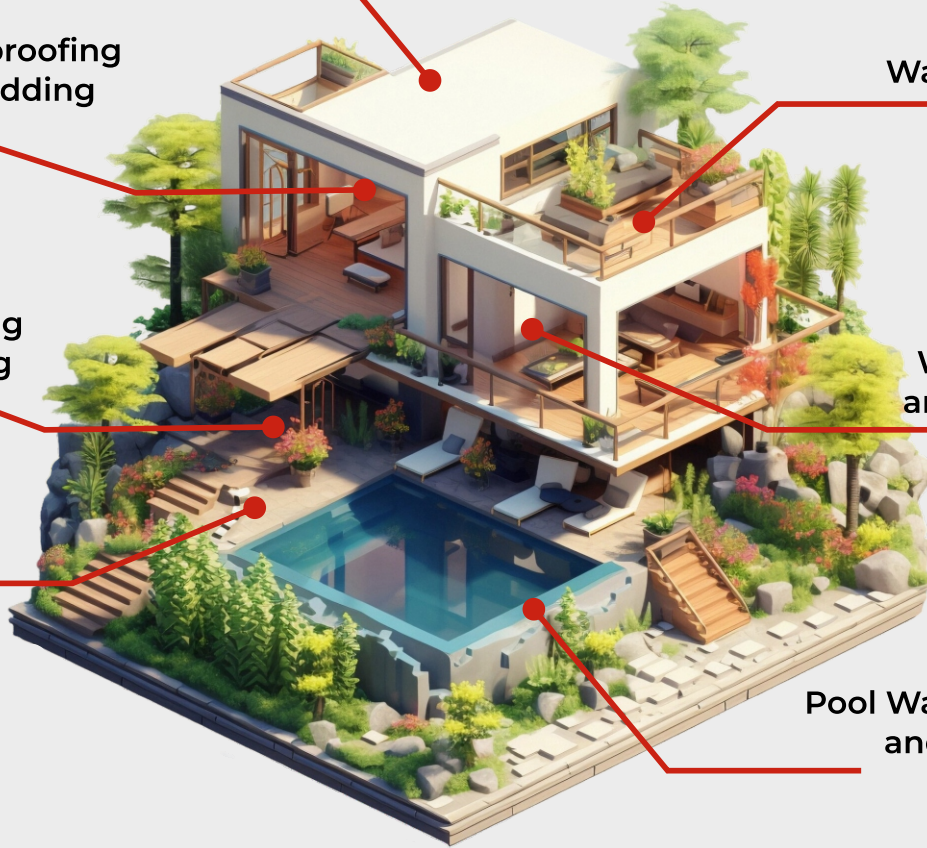
Foundation
Waterproofing
and Grouting

Deck
Coating

Terrace
Waterproofing

Wall Plaster
and Finishing

Pool Waterproofing
and Tiling



PRODUCT RANGE



CATEGORIES

1. GripTech range

- A. Griptile - Silver
 - B. Griptile - Gold
 - C. Griptile - Platinum
 - D. Griptile - Diamond
 - E. Griptile - Ultra
 - F. Griptile Latex
 - G. Blockbond
-

2. Concrete Admixture System

- A. PCE 3100
 - B. PCE 4100
-

3. Interior & Exterior Waterproofing Solutions

- A. LW+
 - B. Hydroseal WR
 - C. Durabond SBR
-

4. Protective Coatings

- A. BioGuard
 - B. ArmourFlex
-

5. Concrete Repair

- A. CemKrete
-

6. Tile Joints and Filler

- A. Epoxy Grout
 - B. Cementitious Tile Filler
-

7. Industrial Solutions

- A. AnchorFix AG
 - B. DuraTop
-

8. Wall Finishing Solutions

- A. PuttyPlus
- B. Fixplast



GRIPTECH RANGE

GripTile - Silver

KB BuildChem GripTile Silver is a Type 1, single-component, polymer-modified tile adhesive formulated with high-quality cement, graded silica sand, and performance-enhancing additives. It is a high-strength, multipurpose adhesive in powder form, suitable for fixing tiles on both horizontal and vertical interior applications over cementitious substrates.

Advantages

- Ready to Use (Just Add Water)
- Non-Shrink with Excellent Adhesion
- Superior Bond Compared to Conventional Mortar
- Fast Setting & Rapid Strength Development
- Self-Curing Properties
- Good Mechanical Strength



Available in : 1 KG 5 KG 10 KG 20 KG 50 KG

GripTile - Gold

KB BuildChem GripTile Gold is a Type 2, cement-based, ready-to-use premixed single component tile adhesive in powder form. It is polymer-modified and specially formulated for versatile tile applications. Suitable for both horizontal and vertical installations, it provides reliable adhesion on concrete and plastered surfaces, making it ideal for interior wall and floor tile fixing.

Advantages

- Suitable for Damp Substrates
- High Adhesive Bond Strength
- Excellent Slip Resistance
- High Early Strength Development
- Fast Curing
- Suitable for Low Porosity Tiles
- Thixotropic Formulation
- Economical Solution



Available in : 1 KG 5 KG 10 KG 20 KG 50 KG

GripTile - Platinum

KB BuildChem GripTile Platinum is a Type 3, ready-to-use, pre-mixed single-component adhesive designed for multipurpose interior and exterior applications. It offers excellent adhesion to concrete, plaster, and a variety of construction substrates, making it suitable for versatile tile installations across residential and commercial projects.

Advantages

- Suitable For Damp Substrates
- High Adhesive Bond Strength
- Excellent Slip Resistance
- High Early Strength Development
- Fast Curing
- Water Resistant
- Extended Open Time (Up to 30 Min.)
- Thixotropic Formulation
- Tropicalized & Eco-Friendly
- Economical Solution



Available in : 1 KG 5 KG 10 KG 20 KG 50 KG

GripTile - Diamond

KB BuildChem GripTile Diamond is a Type 4, single-component tile adhesive formulated with high-strength cement, high polymer content, selected silica/quartz mineral fillers, and performance-enhancing additives. It is capable of forming adhesive layers up to 12 mm thickness and is ideal for fixing ceramic and vitrified tiles on both interior and exterior surfaces, including vertical and horizontal applications.

Advantages

- Zero Vertical Sag
- Thick Bed Application
- Superior Slip Resistance
- High Bond Strength
- Tile-on-Tile Compatibility
- Extend Open Time



Available in : 1 KG 5 KG 10 KG 20 KG 50 KG

GripTile - Ultra

KB BuildChem GripTile Ultra is a premium, high polymer-modified, white cement-based tile adhesive designed for strong and durable fixing of ceramic, vitrified tiles, and natural stones on walls and floors.

Suitable for interior and exterior applications, it provides excellent bond strength, enhanced flexibility, and superior water resistance. Recommended for thin-bed application up to 6 mm thickness, extendable up to 12 mm in limited areas.

Advantages

- Power Grip Adhesion
- Flex-Ready Formula
- Smooth Surface Application
- Fast & Easy Workability
- Shrink-Free & Water-Resistant
- No Tile Pre-Soaking Needed



Available in : 1 KG 5 KG 10 KG 20 KG 50 KG

GripTile - Latex

KB BuildChem GripTile Latex is a Tile Fixer-Liquid which is a high-performance elastomeric polymer additive for on-site tile fixing mortar. It enables thin-bed application, reducing material consumption while providing superior bonding strength over traditional tiling methods. The formulation improves water retention, ensures slower and uniform setting, and prevents cracking of the bed mortar.

Advantages

- Superior Adhesion
- No Curing Required
- Crack-Free Application
- High Workability
- Flexible
- No Bedding Required



Available in : 1 Ltr. 5 Ltr. 10 Ltr. 20 Ltr. 50 Ltr.

BlockBond

KB BuildChem BlockBond is an advanced, polymer-modified, grey cement-based, ready-to-use mortar specially designed for bonding AAC blocks, concrete blocks, fly ash bricks, and precast elements. It is a non-shrink, self-curing, and water-resistant block joining mortar that ensures strong adhesion, reduced joint thickness, and durable masonry construction.

Advantages

- Ready to Use (Just Add Water)
- Thin Joint Application with High Tensile Adhesion
- High Spread Ability
- Superior Bond Compared to Conventional Mortar
- Excellent Strength & Water Retention
- Economical Usage
- Suitable for Precast Applications
- Self-Curing Properties



Available in : 1 KG 5 KG 10 KG 20 KG 40 KG



CONCRETE ADMIXTURE SYSTEM



PCE 3100

KB BuildChem CEMCON PCE 3100 is a new-generation superplasticizer based on Polycarboxylic Ether (PCE). It enhances concrete by achieving the desired workability while reducing the water-to-cement ratio, improving both early and long-term strength. The formulation is designed to maintain fresh concrete workability without compromising setting time.

It is particularly suited for Ready Mix Concrete and on-site job applications, where high performance, early strength, and long-term durability are required.

Advantages

- Optimized Molecular Structure
- Cohesive, Low-Viscosity Concrete
- Extended Hauling Capability
- Reduce Thixotropy
- Minimized Shrinkage & Cracking
- Enhanced Compressive Strength
- Cement Savings



Available in : 225 KG

PCE 4100

KB BuildChem CEMCON PCE 4100 is a next-generation superplasticizer based on Polycarboxylic Ether (PCE) technology. It is specially formulated to deliver enhanced workability for concrete while reducing the water-to-cement ratio, ensuring superior strength and durability.

Advantages

- Workability Retention without Slump Retainer
- Improved Concrete Flow & Cohesion
- Reduce Thixotropy & Segregation Risk
- Superior Surface Finish & Durability
- Optimized Water & Cement Efficiency



Available in : 225 KG



Interior & Exterior

WATERPROOFING SOLUTIONS



LW+

LW+ is a high-performance integral waterproofing admixture for concrete and cement mortars. Its advanced formulation of water-repellent and specialty chemicals tightens the capillary structure of concrete, making it denser, stronger, and more resistant to water ingress. LW+ also improves workability, ensures better cohesion, and eliminates segregation for superior quality concrete.

Advantages

- Waterproof Protection
- Enhanced Cohesion
- Maintained Setting Time
- Water Reduction
- Breathable Barrier



Available in : 200 ML 1 Ltr. 2 Ltr. 5 Ltr. 20 Ltr.

HydroSeal WR

HydroSeal WR is an advanced, ready-to-apply water repellent that forms a powerful invisible barrier against water on porous building materials

Advantages

- Aesthetic Protection
- Breathability
- Enhanced Durability
- Efflorescence Control
- Crack Bridging Capability
- Weather Resistance
- Anti-Algae & Moss Protection



Available in : 200 ML 1 Ltr. 2 Ltr. 5 Ltr. 20 Ltr.

DuraBond SBR

DuraBond SBR is a high-performance styrene-butadiene copolymer tailored for cementitious mixes. It ensures strong, durable bonding, resists hydrolysis, and is ideal for both interior and exterior applications.

Advantages

- Superior Adhesion
- Enhanced Strength
- Reduced Water Permeability
- Durability Protection
- Versatile Use



Available in : 200 ML 1 Ltr. 2 Ltr. 5 Ltr. 20 Ltr.

PROTECTIVE COATINGS



BioGuard

BioGuard is a specially engineered surface treatment formulated with low-toxicity biocides and advanced surfactant technology. It is designed for application on both exterior and interior wall surfaces prone to high humidity, effectively controlling the growth of algae, fungus, and microbial contaminants. The formulation is non-metallic, free from formaldehyde, and biodegradable, making it environmentally responsible while ensuring safe usage in residential, commercial, and industrial environments

Advantages

- Deep Penetration Action
- Long-Lasting Protection
- Low Toxicity Formula
- Environmentally Responsible
- Versatile Application
- Improves Surface Appearance
- Compatible with Recoating
- Easy Application



Available in : 200 ML 1 Ltr. 2 Ltr. 5 Ltr. 20 Ltr.

ArmourFlex

ArmourFlex is a high-solids, pure acrylic-based elastomeric coating engineered to deliver long-lasting flexibility, superior durability, and cost-effective waterproofing protection for concrete structures.

Its advanced formulation forms a seamless, flexible membrane that accommodates structural movements while providing excellent resistance to water ingress, weathering, and environmental damage—making it an ideal protection system for roofs, terraces, facades, and exposed concrete surfaces.

Advantages

- Advanced Elastomeric Technology
- Superior Waterproof Protection
- Breathable Protection System
- Extreme UV & Weather Resistance
- Long Term Structural Durability
- High-Performance Adhesion
- Thermal Movement Accommodation
- Moist Surface Applicability
- Alkali & Chemical Resistance



Available in : 1 KG 5 KG 10 KG 20 KG 50 KG





CONCRETE REPAIR

CemKrete

CemKrete is a high-performance acrylic co-polymer admixture for cement-based mortars and concrete. It improves bonding, flexibility, workability, and impact resistance. Perfect as a tie coat, it strengthens the bond between existing and new concrete surfaces.

Advantages

- Superior Adhesion
- Chemical & Water Resistant
- Enhance Durability
- Anti-Microbial Protection
- Breathable System
- Versatile Applications



Available in : 200 ML 1 Ltr. 2 Ltr. 5 Ltr. 20 Ltr.



TILE JOINTS AND FILLER



Epoxy Grout

Epoxy Grout is a three-component, easy-to-use, epoxy-based tile grout designed for superior performance and durability. It is suitable for grouting all types of ceramic tiles, vitrified tiles, porcelain tiles, natural stones, and mosaics on both floors and walls.

It is especially recommended for hygiene-sensitive areas and locations requiring sterile conditions.

When the three components are mixed, EPOXY GROUT forms a smooth, creamy, and thixotropic paste that ensures easy application, effortless cleaning, and long-term maintainability. The cured grout delivers excellent mechanical strength along with superior chemical and stain resistance.

The result is a high-performance, durable, and easy-to-maintain epoxy grout system.

Advantages

- Suitable Joint Widths (2 - 10 mm)
- Wall & Floor Application
- Highly Thixotropic & Non-Sag
- High Abrasion Resistance
- High Compressive Strength
- Low Water Absorption
- UV Resistance
- Stain & Chemical Resistance
- Hygienic & Bacteria-Resistant
- Low VOC Content & Full Curing



Available in : 1 KG 5 KG

Cementitious Tile Grout

Cementitious Tile Filler is a premium polymer-modified cementitious grout formulated for interior and exterior applications. It offers excellent joint strength, improved adhesion, and enhanced durability for long-lasting performance.

It is ideal for grouting ceramic tiles, vitrified tiles, marble, granite, mosaic, and natural stones on both walls and floors, delivering a smooth, uniform, and reliable finish.

Advantages

- Ready-to-Mix Formula
- Polymer-Modified Cementitious Base
- Crack-Free & Non Shrink
- Multiple Colour Options
- Smooth Finish & Good Coverage
- Enhances Surface Aesthetics



Available in : 750 Gm 20 KG



INDUSTRIAL SOLUTIONS



AnchorFix AG

KB BuildChem AnchorFix AG is a shrinkage-compensated (non-shrink), ready-to-use dry powder grout. When mixed with clean water, it produces a free-flowing, non-segregating grout capable of filling complex and structured spaces uniformly.

The formulation consists of cements, graded aggregate fillers, and specialty additives

Advantages

- Non-Shrink & Shrinkage Compensated
- Free-Flowing & Non-Segregating
- High Early Strength
- Reduced Water Demand
- Durable & Long-Lasting
- Controlled Expansion
- Versatile Application
- Positive Load Transfer



Available in : 30 KG

DuraTop

KB BuildChem DURATOP is a ready-to-use, factory-processed dry shake surface hardener, specially formulated with graded emery grit (mineral aggregate), cement, and select additives. It is designed to provide abrasion- and wear-resistant flooring and paving. The product is intended for broadcasting over freshly placed green concrete, enhancing surface durability, strength, and long-term performance.

Advantages

- Built-In Wear Resistance
- Enhanced Impact Resistance
- High Surface Density
- Suitable for Wet Areas
- Vacuum Dewatering Compatible
- Non-Rusting & Easy Maintenance
- Fast Construction
- Excellent Adhesion



Available in : 30 KG





WALL FINISHING SOLUTIONS

PuttyPlus

PuttyPlus is a premium white finishing plaster formulated with high-quality white cement, selected natural minerals, and advanced performance polymers. It provides a strong, durable, and ultra-smooth finish while effectively covering surface imperfections. Backed by proven performance, **PuttyPlus** stands for superior quality, reliability, and long-lasting results.

Advantages

- Superior Adhesion to Cementitious surface
- Direct Application on RCC without Hacking
- High Build for Effective Surface Levelling
- Water-Resistant & Crack-Resistant Finish
- Smooth, Bright, Premium White Appearance
- Suitable for Interior & Exterior
- Breathable (Vapour Permeable) Formulation
- Non-Toxic, Low VOC & Safe to Use



Available in : 1 KG 5 KG 10 KG 20 KG 40 KG

FixPlast

KB BuildChem FixPlast is a polymer-modified, fibre-reinforced, premixed cement-based plaster suitable for both interior and exterior walls. It offers superior convenience and ease of application while providing excellent strength and adhesion to the substrate. The plaster creates a smooth, even surface, allowing tiling and finishing work to be carried out faster and more efficiently

Advantages

- High Strength
- Crack-Free Finish
- Faster Application
- Excellent Coverage
- Economical
- Premixed



Available in : 1 KG 5 KG 10 KG 20 KG 40 KG





KB BUILD CHEM
Build.Bond.Protect.

CORPORATE OFFICE

Survey No. 176, Plot No. 2, Nr. Arsh Alloys, Ghanghali, Sihor,
Sihor, Bhavnagar- 364240, GUJARAT

WebSite : www.kbbuildchem.com

HelpLine

+91 78741 94733

E-Mail : info@kbbuildchem.com

Visit For More:

